



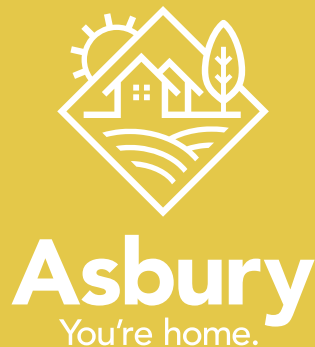
A NEWSLETTER FOR THE RESIDENTS AND BUSINESSES THAT CALL ASBURY, IOWA **home**.

IOWA

CITY OF ASBURY



ISSUE 41
SPRING
2021



CITY OF ASBURY **home**

CITY COUNCIL Goal Setting Session 2022

The Asbury City Council met mid December for their annual “Goal Setting” work session. The work session agenda included a review of prior year accomplishments, Capital Improvement Plan 2021 Projects and Programs, Policies and Initiatives.



After much discussion and a long list of priorities and projects the council agreed on the following priorities for 2021-2022:

CITY COUNCIL PRIORITIES

TOP PRIORITIES

1. Traffic – East West Corridor Traffic Study.
2. Pedestrian Walkways: Connect city via sidewalks and trails.
3. Storm water issues – retention/detention ponds, quality of water, runoff.
4. Maintain excellent financial condition of city.

HIGH PRIORITY

1. Economic development along Hales Mill Road and Asbury Road – designate commercial zones.
2. Maintain and improve amenities – parks, library, golf course, green space, comprehensive park and recreation plan.
3. Continue to lower debt and property taxes.
4. Annexation study.

The council will work toward attaining these priorities in the FY 2022 and beyond in their project planning and city operations.



Sign up for ebilling and/or ACH and enter for a chance to win a gift card from Casey's General Store or Jumble Coffee Company! Grand Prize winner will win a Samsung Tablet!



Utility Billing Payment Options

We have several convenient ways to pay:

1. Sign up for monthly automatic withdraw payments (ACH).
ACH payments are a free method for your convenience to pay your monthly utility bill. Never write a check again! You can get an ACH Form on our website or stop in and get one at the window. You can return the form with a voided check and the payment will be automatically each month on the 15th so you will never miss a payment.
2. Make a payment online at cityofasbury.com/how-do-I/pay/bills with credit card or echeck. (fees apply)
3. Drop a check in our convenient drop box located in the City Hall driveway.

eBilling

Can't make it to your mailbox over the snow drifts? Your Utility bill can be emailed to you. You may enroll on our website at cityofasbury.com/how-do-I/sign-up-for-eBilling and receive your City utility bills via email. It's so easy and sustainable!

Check out our website at cityofasbury.com/how-do-I to sign up for these services and be entered to win prizes.

Asbury FY22 BUDGET HIGHLIGHTS

The Fiscal Year 2022 budget is prepared with a property tax growth rate of 2.05% and as a result the proposed property tax rate of \$9.50 is a decrease of seven cents (\$0.07) from the prior year. This results in an additional \$43,230 in tax collections. Overall property values rose 4.45% because City realized approximately \$11 million in new construction value to the property tax rolls. Property taxes for the majority of Asbury property owners may see an approximately \$23 increase on the city share of property taxes for FY22.

PRIOR YEAR TAX RATE HISTORY:

FY 2022	\$9.50
FY 2021	\$9.57
FY 2020	\$10.00
FY 2019	\$10.00
FY 2018	\$10.75
FY 2017	\$10.50
FY 2016	\$10.30
FY 2015	\$10.30

In the proposed budget Water, Sanitary Sewer and Storm Sewer utility use rates will remain the same as in FY 21. Refuse rates as presented are unchanged from the prior year. The contract with Dittmer is up for renewal this year. At the Strategic Planning Session there was interest from the City Council to improve the refuse and recycling services by incorporating larger containers that allow for mechanized pick up. It is expected the refuse rate will increase with the investment of the larger containers and the loss of revenue from the purchase of additional garbage tags. It is recommended the City Council amend the budget at the time the new refuse contract is approved to more accurately reflect the result of the new negotiated contract.

Proposed capital project improvements will be funded with a combination of General Fund, Road Use Tax, Local Option Sales Tax, reserves for improvements and Transportation Alternative Program Funds.

In addition Debt service is estimated based on current debt principal and interest payments. City debt limit for Fiscal Year 2022 is \$24,829,240. This is \$2,091,685 higher than the prior year. The city will retain 73.7% of its general obligation debt capacity for future projects.



\$1,102,000 of Debt Service is paid by Tax Increment Financing (TIF). \$425,388 is funded with property taxes and \$213,250 funded with Option Tax Revenue.



Statutory Debt Limit This chart shows the percentage of statutory debt limit by fiscal year from FY 15-FY 21. For future years the City's Capital Plan estimates future statutory debt limit not to exceed 32%.



Total Debt Amount of total debt has been decreasing since FY 15. For future years, debt will be retired and reissued each year for projects as designated on the City's Capital Improvement Plan which estimates debt outstanding will remain consistent in the \$6 million to \$7 million range.

HOLIDAY CLOSURES

City Hall will be closed as follows:

EASTER HOLIDAY

Friday, April 2, 2021

MEMORIAL DAY

Monday, May 31, 2021

Keep in touch with your community.
Check out www.cityofasbury.com



Seize the OPPORTUNITY.

Mortgage rates are **exceptionally low**. Premier Mortgage can help you determine if NOW may be the right time to refinance. Give us a call or apply online today!

www.premierbanking.bank/personal/home-loans
or call 563-588-1000



Tracy Schaul (NMLS #746726)
VP, Mortgage Lending
tschaul@premierbanking.com



Premier
MORTGAGE

Member
FDIC





Citizen Involvement

4

A NEWSLETTER FOR THE RESIDENTS AND BUSINESSES THAT CALL ASBURY, IOWA **home**.

HOW TO IMPROVE YOUR LAWN

The soil quality restoration method chosen depends if the ground is bare or if the lawn has already been established.



Establishing New Lawns

Restoring your yard to an 8 inch layer of healthy, de-compacted soils requires a combination of tillage, topsoil, and/or compost. Soil quality restoration is best when performed as part of the final landscaping with new construction.

- Contact Iowa One Call to have utilities located.
- Deep tillage (4-8 inches) breaks up compacted soils.
- Adding 1-3 inches of compost will increase organic matter.
- Seed with turf grass or lay sod.



Improving Existing Lawns

Create healthier soils by adding organic matter to an existing lawn.

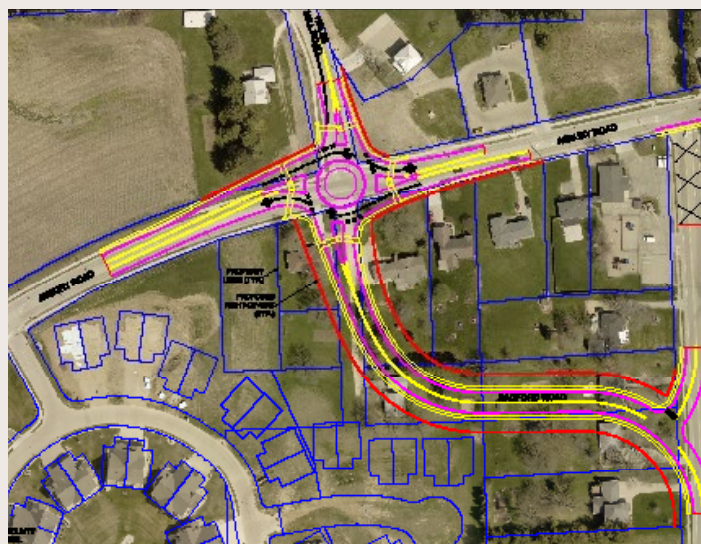
- Contact Iowa One Call to have utilities located.
- Locate and mark in-ground sprinklers and invisible fences.
- Mow lawn to a height of 2 inches.
- Aerate the lawn with a plug or deep tine aerator.
- Apply 1/2 to 3/4 inch of compost to increase the organic matter content of the lawn.
- Apply grass seed over patchy turf if needed.

Proposed Asbury Road & Hales Mill Road Intersection Realignment

The City of Asbury contracted with MSA Professional Survey to conduct a traffic study that included traffic counts, video data collection, traffic modeling and analysis. The result of this work is the 2019 Asbury Road Traffic Study, which analyzed existing conditions, and proposed alternate intersection alignment options for Radford Road, mid block and Hales Mill Road, as well as proposed short term and long term alternatives. The City Council accepted the Asbury Road Corridor Traffic Study at the February 11, 2020 City Council meeting and continued to explore road alignment options and cost alternatives. The City held a public input session on the alternatives on November 24, 2020 and took input from residents on this study.

The City Council reviewed alternatives and costs for the realignment of the Radford Road and Hales Mill Road intersections at the February 9, 2021 meeting with Ben Wilkenson and Jake Huck of MSA Professional Services. After reviewing the pros and cons of three options, the City Council selected the option to proceed with a two lane roundabout at the existing Hales Mill and Asbury Road intersection and re-alignment of Radford Road to the same location (per exhibit).

The planning for the construction of this project will now be taken into consideration in the City's Capital Improvement Plan. The first stage of this long term project is land acquisition and seeking funding sources.





AACRF Seeking Board Members

The Asbury Area Civic and Recreation Foundation is seeking new board members. AACRF organizes the annual Music in the Park festival and the Halloween Parade. If you live in Asbury and would like an opportunity to give back to your community, we encourage you to apply! Please email a letter of interest to:

City of Asbury at wldoan@gmail.com —
Subject "AACRF Board."

PLEASE INCLUDE:

- Your Name, Address and Phone #
- Why you want to serve on the AACRF board
- Previous board experience
- Education, skills or abilities you will bring to AACRF
- Any other info that would make you a good fit for this board

Board VACANCIES WE NEED YOU!

The City of Asbury, Iowa, is seeking applications for a vacancy on the **Planning and Zoning Commission**. The Commission meets once monthly on the third Tuesday of the month.

The City is also seeking application for the **Park Board**. The Board meets once monthly on the first Tuesday of the month.

If you are an Asbury resident and are interested in being considered for appointment to any Boards, please submit a letter of interest to City Administrator, City of Asbury, 5290 Grand Meadow Drive, Suite 1, Asbury, IA 52002 or email to info@cityofasbury.com.

Keep in touch with your community.
Check out www.cityofasbury.com

Buying a first home may be
more affordable than you think.



First Home Now
Specifically for first time homebuyers¹

\$0 Down Payment

No Private mortgage insurance

640 Minimum Credit Score

Don't Have Credit? We may be able to help.

Up to 45% debt to income ratio

Unlimited gift funds or seller contributions

Only available at MidWestOne Bank

Learn more at: MidWestOne.bank/FTHB



MidWestOne™
HOME MORTGAGE

Simply better home loans.

Equal Housing Lender | 800.247.4418 | NMLS #528720

¹ Borrower income, property location and other restrictions apply. Homebuyer education course is required to be completed by borrower. Minimum borrower contribution toward closing costs is 1% of purchase price or \$1,000 (whichever is greater). Homeowners insurance and flood insurance (if applicable) is required. Loan is subject to credit approval and standard loan fees apply. This offer is subject to change without notice and may not be combined with any other offer. Please contact MidWestOne for complete program details.



Reminders

6

A NEWSLETTER FOR THE RESIDENTS AND BUSINESSES THAT CALL ASBURY, IOWA **home**.

Dubuque County Library

There are many events that you can sign up for being held zoom at dubcolib.org. The library has several program for adults, teens and kids to joint monthly or just one time. Programs are held virtually and uploaded to the Dubuque County Library's private YouTube channel, for additional viewings. Zoom room details will be emailed to you after you register for the program.

The Library does also have a NEW Puzzle and Game Collection. At each branch, you can find different games and puzzles. Search the catalog for them. The games and puzzles are available for a 1 week checkout and 3 items per card. Thank you to the Friends of the Library for sponsoring this new collection!

Be sure to check out their online resources page for links to Books and Reading, Cars, Crafts and Home Resources, Databases for students and teachers and Health and Wellness Information.

Current hours for the Asbury Branch are: Monday – Friday: 9 AM -6 PM; Saturday: 9 AM – 1 PM. Sundays: Closed.

FREE YARD WASTE DAYS

Free Spring Yard Waste Days: April 1st and 8th. The yard waste collection season will run from April until November 18, 2021. Yard waste is picked up weekly on Thursdays. Please have your yard waste set by the curb by 6 a.m. An annual tag can be purchased for one container to be set out weekly for \$50. Residents should place their yard waste in a biodegradable bag or container with your tag attached and facing the street. The container or bag cannot exceed 40 lbs. Tree branches must be no longer than four feet in length, and the diameter of the bundle cannot exceed two feet. Tags may be purchased at Casey's General Store and Asbury City Hall for \$2.50.

Spring Clean-Up Day

Spring clean-up day will be held Saturday, May 8, 2021.

Set out all large items and garbage by 6 a.m. Residents who have extra refuse from spring cleaning and leftovers from garage sales may place items curbside for this special pick up. Regular items will be picked up at no charge. A large item tag is needed for the following: water heater, refrigerator, freezer, stove, washer, dryer, dishwasher, air conditioner, dehumidifier, microwave, and gas grill (no propane tanks), lawnmowers, bicycle, weight benches & treadmills, furniture, humidifiers or mattresses.

Spring Reminders

- The storage of materials on roadways is not allowed.
- Boats, trailers, campers, and recreational vehicles are to be stored on a driveway for no more than 48 hours. Street parking maximum is 24 hours.
- Recreational fires are permitted if supervised by a competent person at least 18 years of age. Rubber tires, garbage, construction materials, etc. shall not be burned in a recreational fire.
- Please be mindful of those around you. It is unlawful for the owner of a dog to permit a dog to cause serious annoyance or disturbance to any person by frequent howling or barking. It is also unlawful for any owner or caretaker to allow their animal to defecate on any property they do not own without immediately cleaning up after the animal and disposing of the waste properly. Violations of this ordinance may be subject to a fine.
- Blowing grass clippings in the street is considered a nuisance and therefore prohibited.
- Dumping grass clippings and yard waste on City property is prohibited.
- Keep doors locked on automobiles parked outside.

ASBURY ANNUAL



The Asbury Annual Garage Sale will start Friday, April 30, and continue through the weekend. This year the City will again offer a directory of garage sales that will be available online on the city's website. If you would like to register your garage sale, please email your garage sale information to info@cityofasbury.com. All garage sale listings need to be submitted by April 23, 2021.

Please include your address, date and time of sale and a listing of your major sale items. Each garage sale listing is limited. The City will only accept garage sale listings via email. If you do not have access to a computer or internet, the Asbury Branch of the Dubuque County Library does have internet access and computers to use for free!

The Garage Sale Directory is available from the website only. A basic map of the streets of Asbury is located on the city's website at www.cityofasbury.com under About Asbury and click on City Map.



2021 Pavilion Rentals

Reservations will be taken at City Hall after January 1st for the rental season beginning May 1, 2021, to October 31, 2021. You may also access Pavilion Rental information at www.cityofasbury.com.

1 RENTAL FEES

ASBURY PARK

Wagner Pavilion

HALF DAY: \$50.00 FULL DAY: \$90.00

ASBURY PARK

Sullivan Pavilion

HALF DAY: \$50.00 FULL DAY: \$90.00

CLOIE CREEK PARK

Cloie Creek Pavilion

FULL DAY ONLY: \$100.00

Rental fee includes exclusive use of the indicated pavilion during the rental period. It does not include exclusive use of any other park amenities or guaranteed use of any other park amenities (i.e., splash pad, mountain bike trail, playgrounds, etc.)

2 RESERVATIONS

Reservations will only be made for up to the maximum number of people the City states a pavilion holds. If the group is larger than the number of people that a pavilion holds, then the reservation must be made for both pavilions. If only one pavilion is available, no reservation can be made.

- Wagner Pavilion holds a maximum of 65 people.
- Sullivan Pavilion holds a maximum of 50 people.
- Cloie Creek Pavilion holds a maximum of 48 people.

3 PAYMENT & AGREEMENT

Payment and completed rental agreement are required to secure your date. Renters may call in advance to have their preferred date held for up to 5 business days. If rental agreement and payment are not received, by the end of the 5th day, the renter will forfeit their hold on the date, and the pavilion may be rented by another party.

Meadows Golf Club MEMBERSHIP

The Meadows Golf Club is excited to have you become a member of our golf community. There are many Membership Packages to choose from: Family, Couples, Single Juniors, Weekday and a cart membership can be added to that.

Green Fees (Dubuque County Resident)

Weekday: \$28 - 18 Holes

Weekend: \$32 - 18 Holes

Junior Weekday: \$10

Junior Weekend: \$15

Do you need a club fitting? The Meadows offers club fitting experts and will fit you for the proper club head design, shaft, length, lie and grip size. Call the Meadows Pro Shop at 563.583.7385 ext. 1 for a fitting appointment.

Check out the website for monthly golf specials at meadowsgolf.com.




**SHOP SMALL
BUSINESS**

**WE CARRY STOCK CLUBS
& WE MATCH PRICES**

ugolfdbq.com
1082 Cedar Cross Rd, Dubuque, IA 52003



City of Asbury

5290 Grand Meadow Drive

Suite 1

Asbury, Iowa 52002

563.556.7106 Phone

563.556.2001 Fax

info@cityofasbury.com Email
www.cityofasbury.com Web

Sara Burke Editor

Gigantic Design Co. Design

Support your community.

For advertising rates and

availability, please contact

Sara at 563.556.7106

**When Members
Come First...**



[Dupaco.com /recognition](http://Dupaco.com/recognition)

Forbes

**BEST-IN-STATE
CREDIT UNIONS**

2020

Powered by STATISTA

Raddon
Crystal
Performance
Award



Federally insured by NCUA.

**ISSUE 41
SPRING
2021**



CITY OF ASBURY

IOWA

A NEWSLETTER FOR THE RESIDENTS AND BUSINESSES THAT CALL ASBURY, IOWA **home**.

Presorted
Standard
U.S. Postage
PAID
Dubuque, IA
Permit No. 477